

Copper Plating and the Modeler's Art



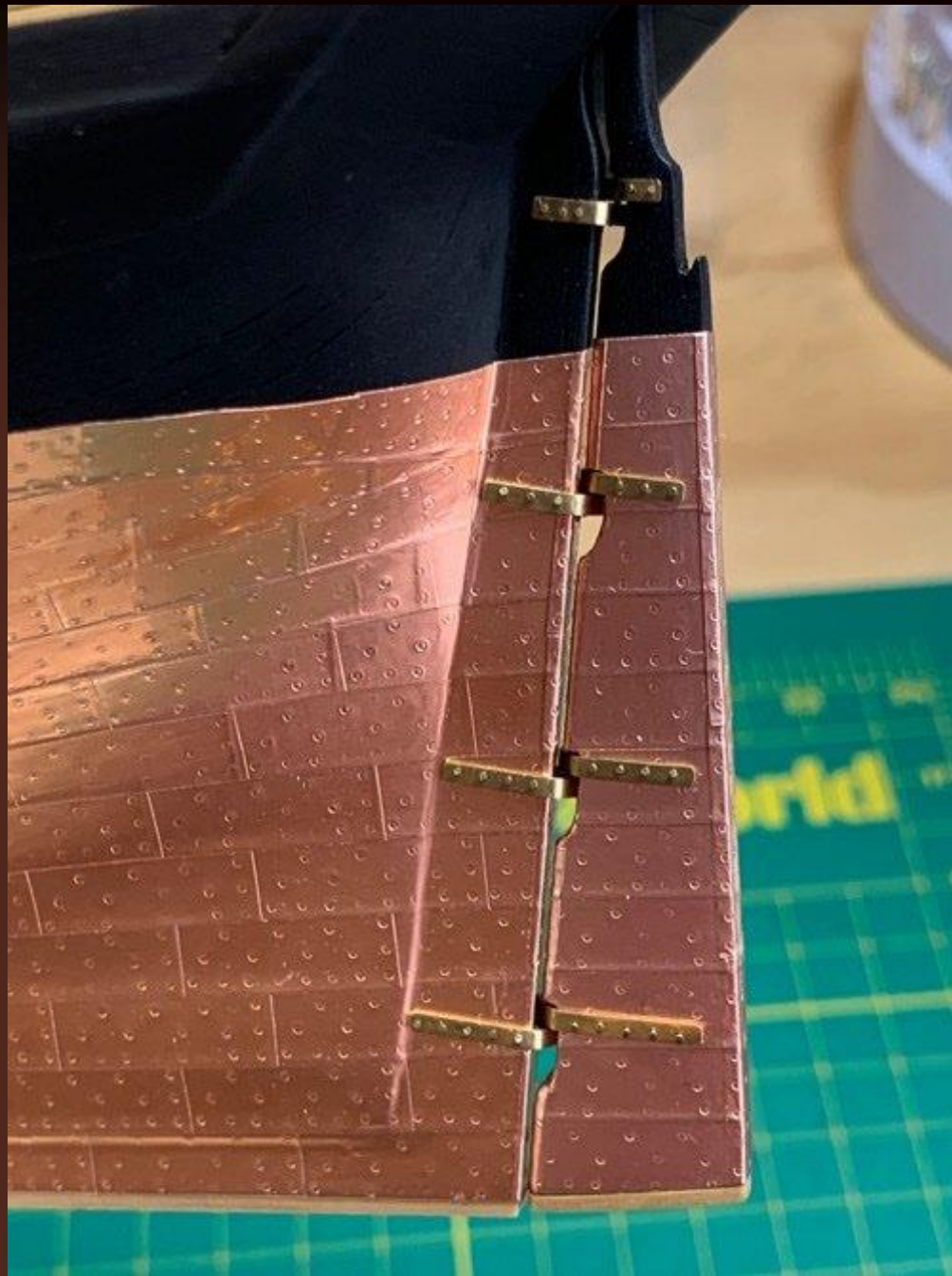
USS Constitution

by

Frank Pearsall







The *Snow Squall*

Maine Maritime Museum

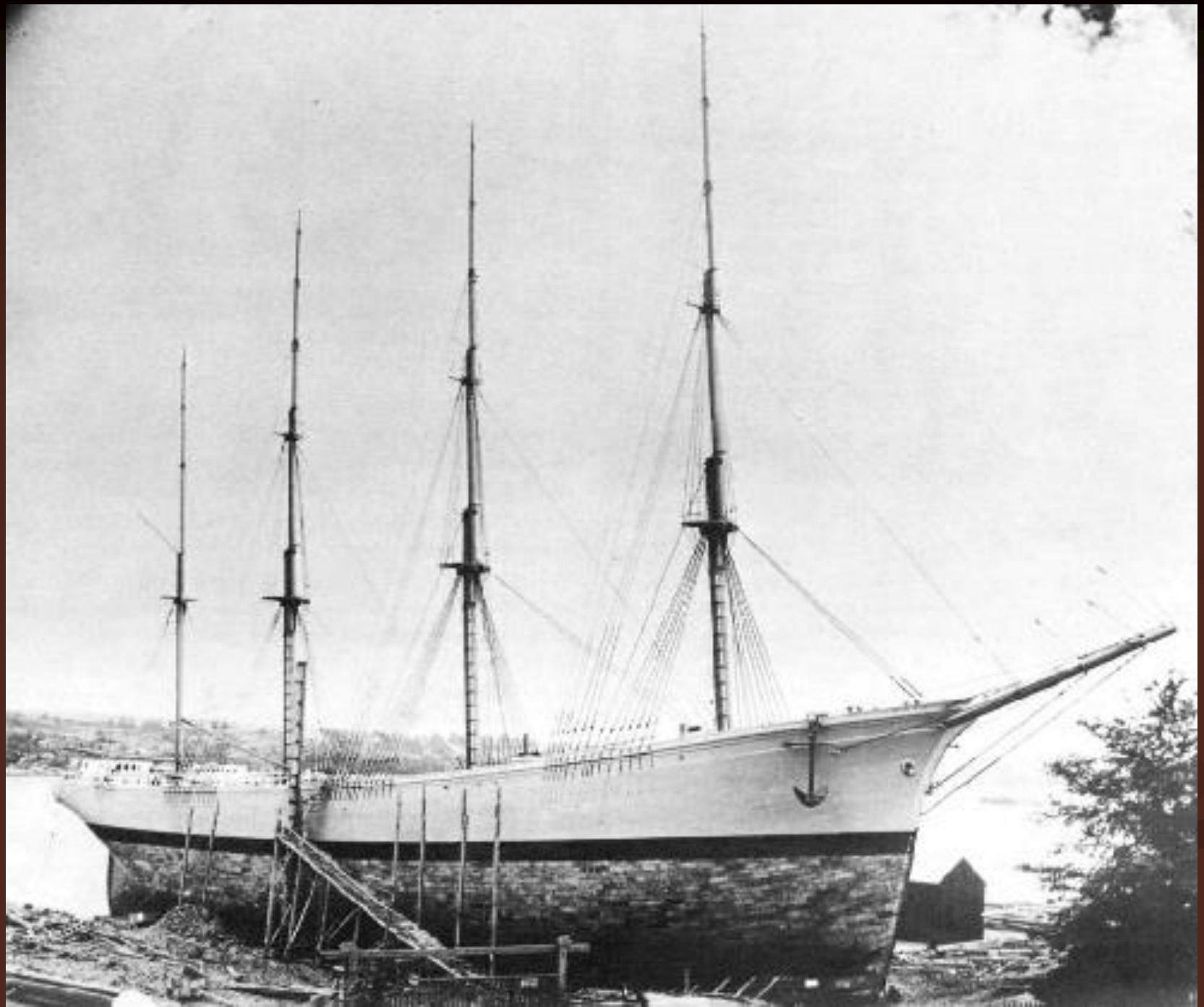


Muntz Metal (Yellow Metal)







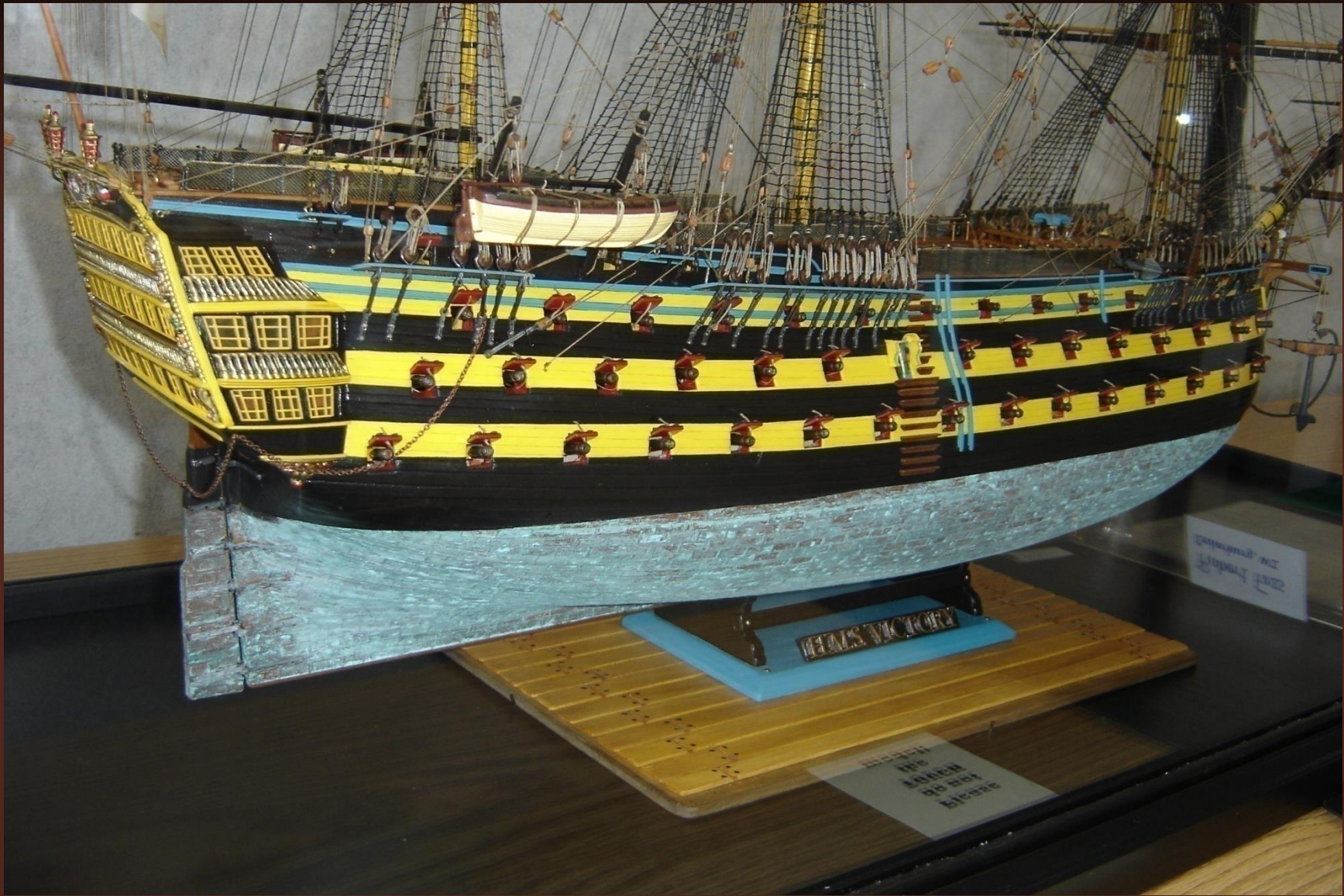


*Coloration by
Chemical
Treatment*

Verdigrijs







The "HMS Victory" model is a highly detailed representation of the original ship, showing the intricate rigging and the three masts. The hull is painted in the traditional colors of the ship, and the gunports are clearly visible. The model is mounted on a wooden base, and the name "HMS VICTORY" is displayed on a blue plaque.

THE "HMS VICTORY" MODEL IS A HIGHLY DETAILED REPRESENTATION OF THE ORIGINAL SHIP, SHOWING THE INTRICATE RIGGING AND THE THREE MASTS. THE HULL IS PAINTED IN THE TRADITIONAL COLORS OF THE SHIP, AND THE GUNPORTS ARE CLEARLY VISIBLE. THE MODEL IS MOUNTED ON A WOODEN BASE, AND THE NAME "HMS VICTORY" IS DISPLAYED ON A BLUE PLAQUE.







Patina-It by A-WEST



**Weathering and
Antiquing Chemicals for
the Most Realistic Models**



Available from Walthers





Charles W. Morgan

By

Ken Thomsen

Verdigris coloration accomplished by using a solution of Aluminum Chloride and Copper Sulfate

Coloration
By
Heating

Factors Affecting Coloration

- Means by which plates are heated.
- Degree of heat.
- Length of time plates are subjected to heat.
- Means by which plates are cooled.
- Plates are left unfinished or sealed.
- Level of oxidation on plates.
- Exposure to oil from your hands.



USS Constitution
By
Bob George

Coloration was achieved by placing the plates on a cookie sheet, which was covered with Reynolds Wrap. They were then “cooked” on a gas grill for 30 to 40 minutes.

After gluing the plates to the hull with CA, they were sealed with MINWAX Polycrylic.



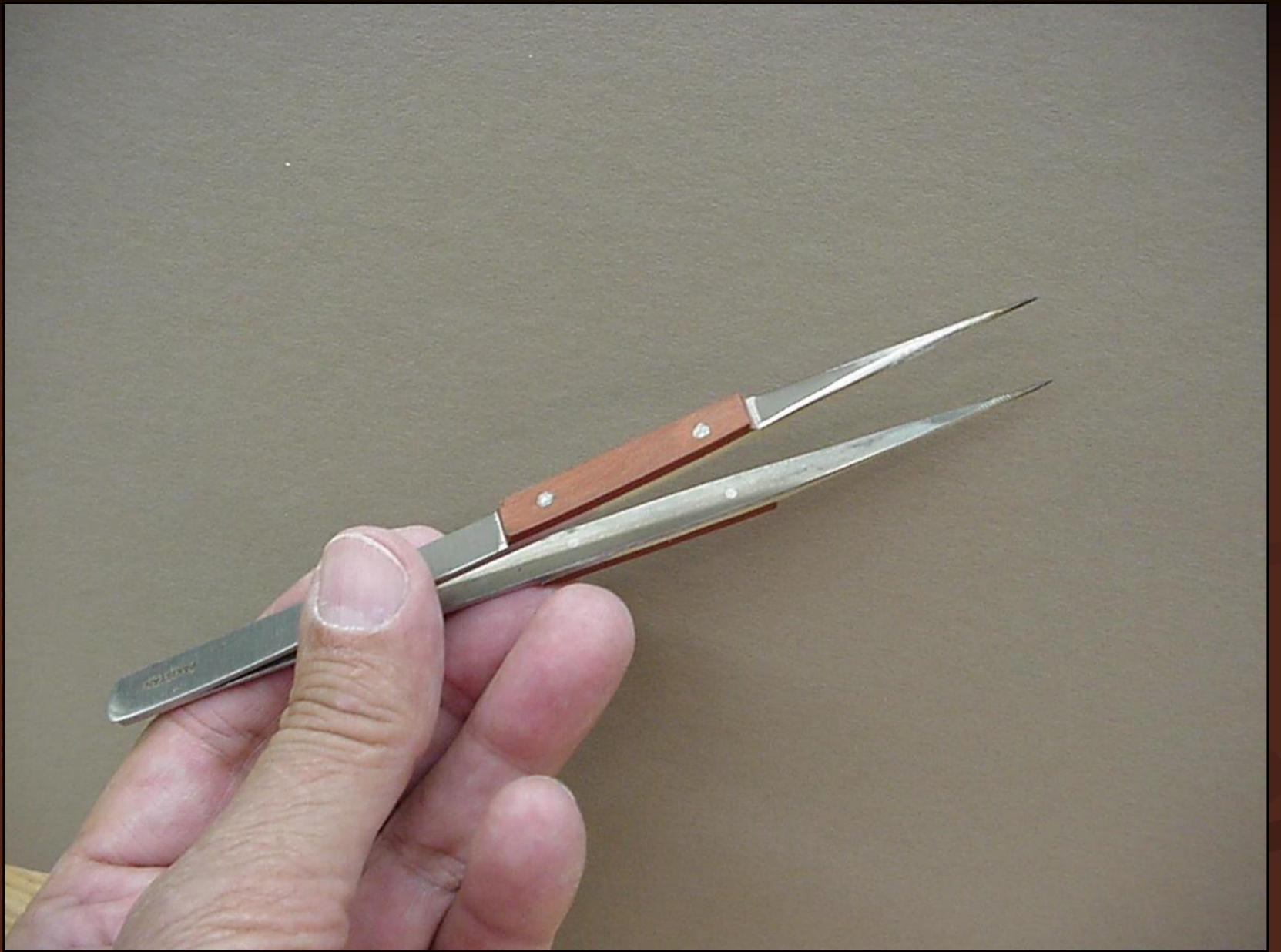


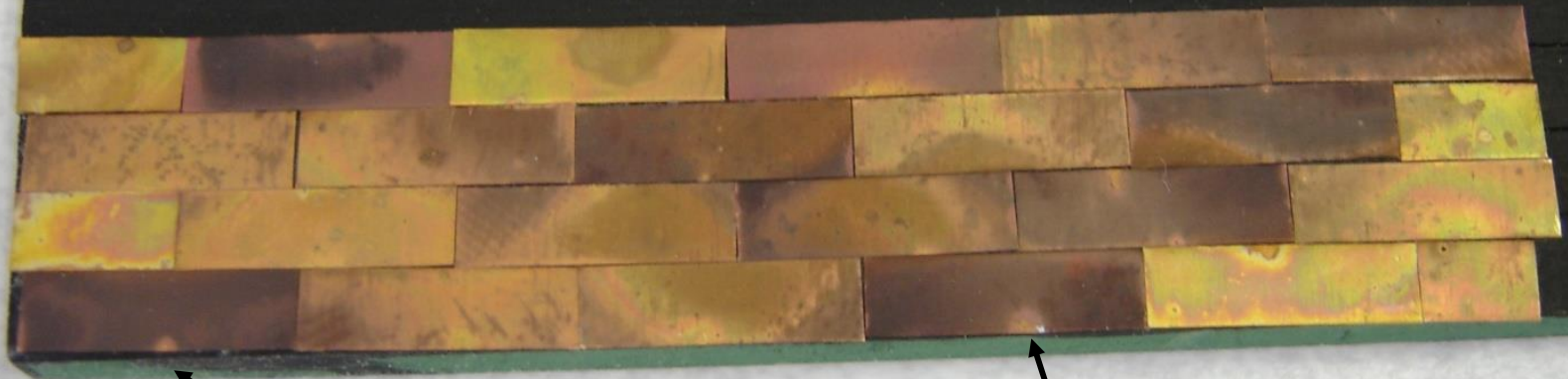




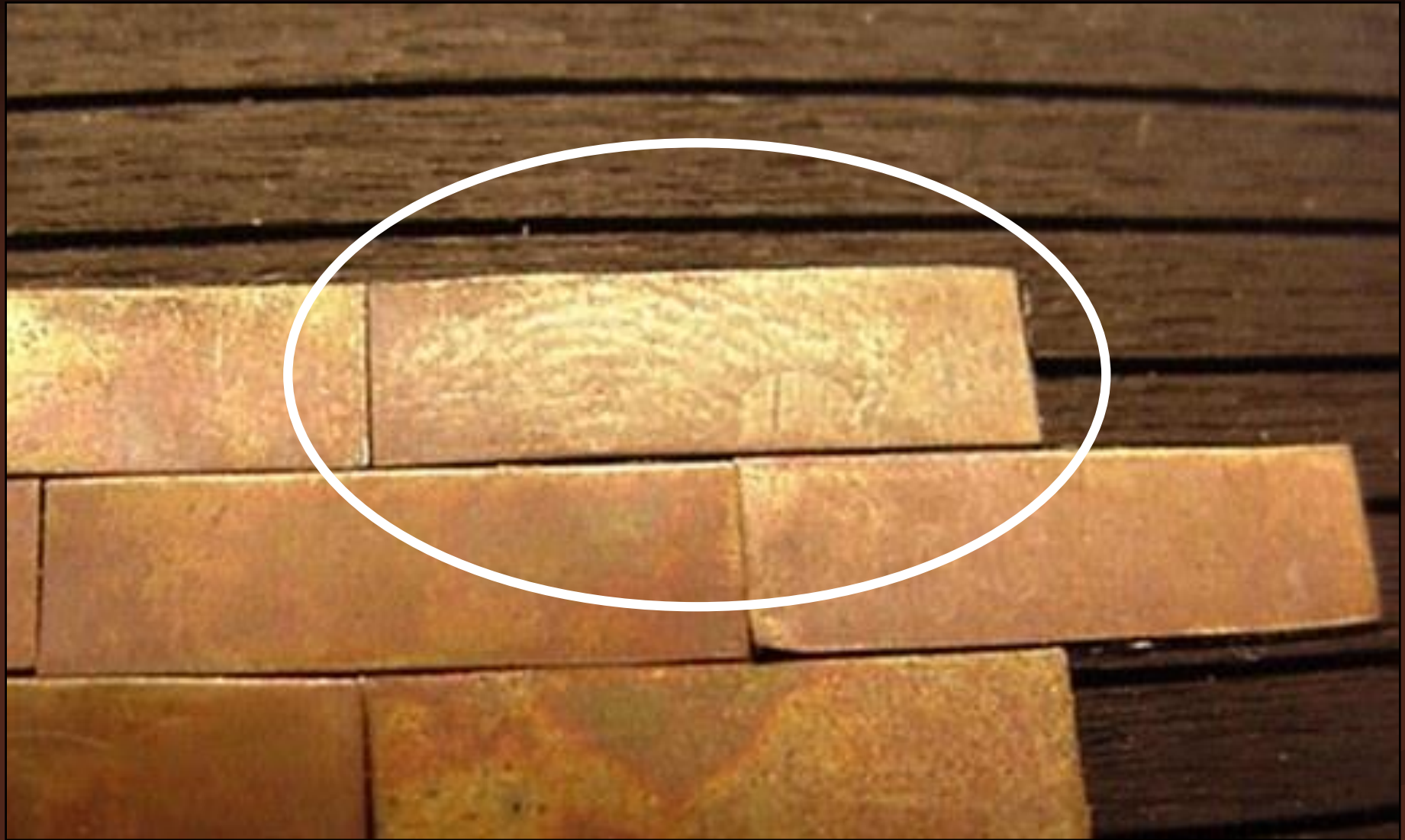




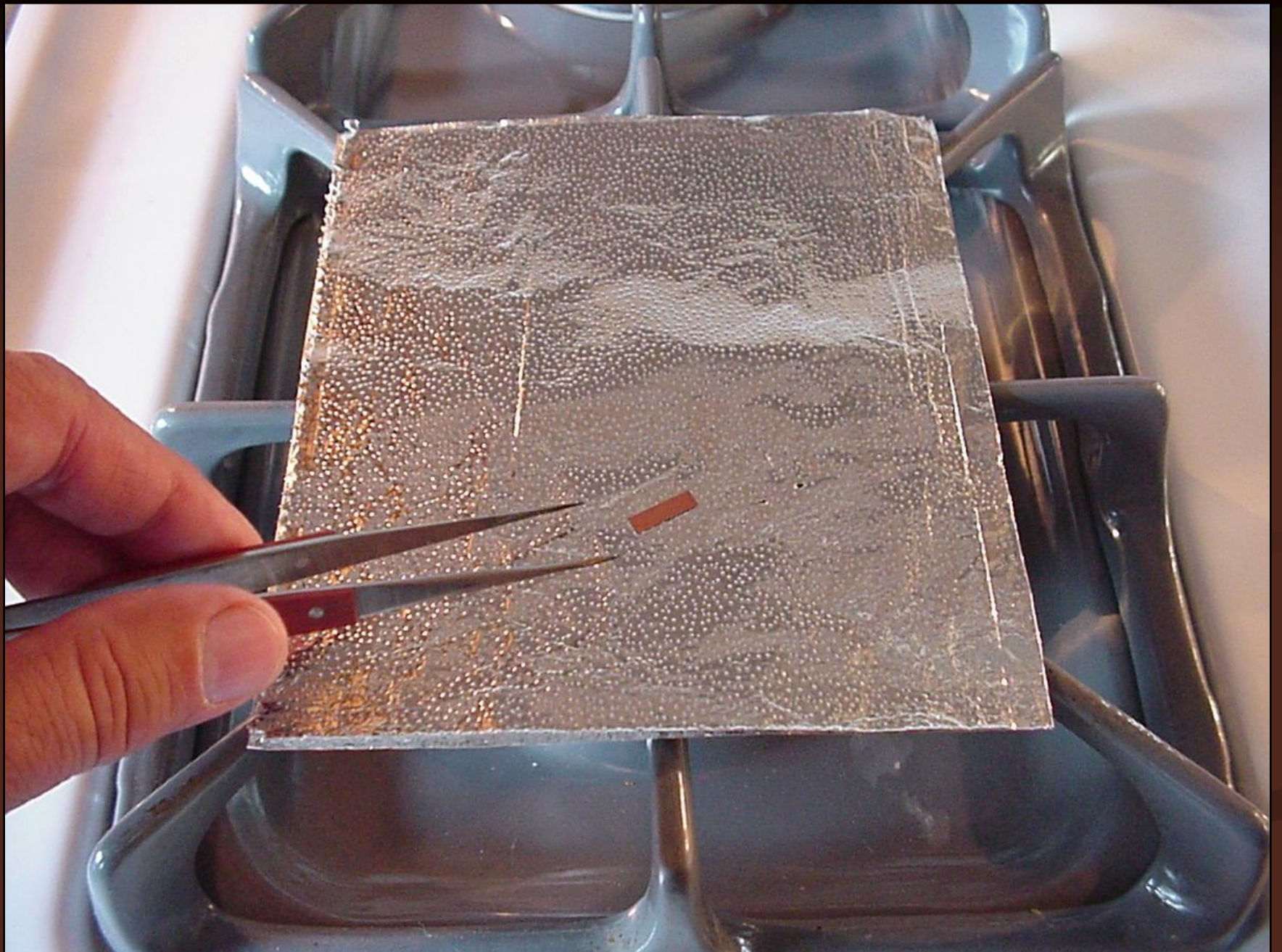




Heat Sink Marks



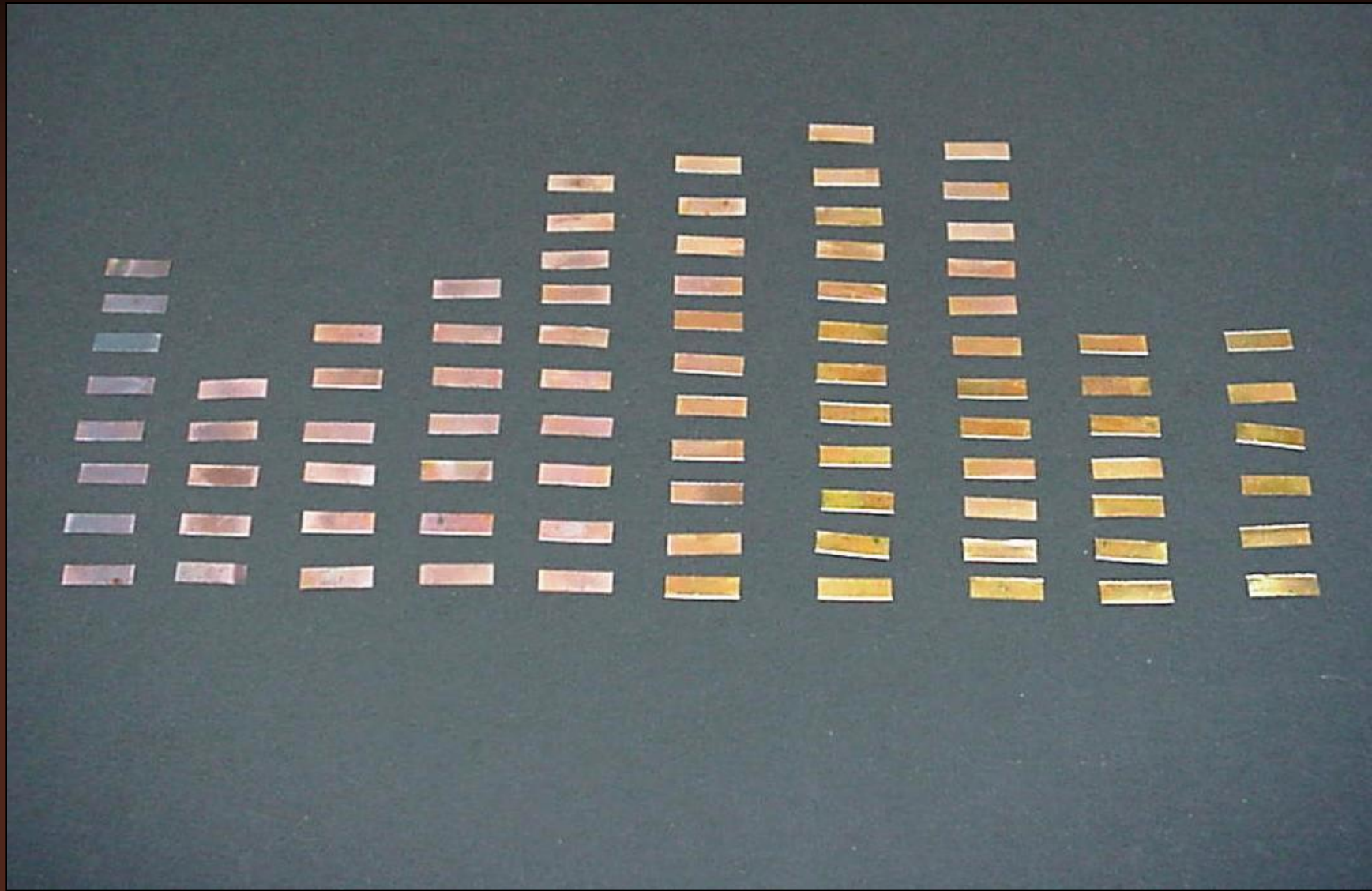








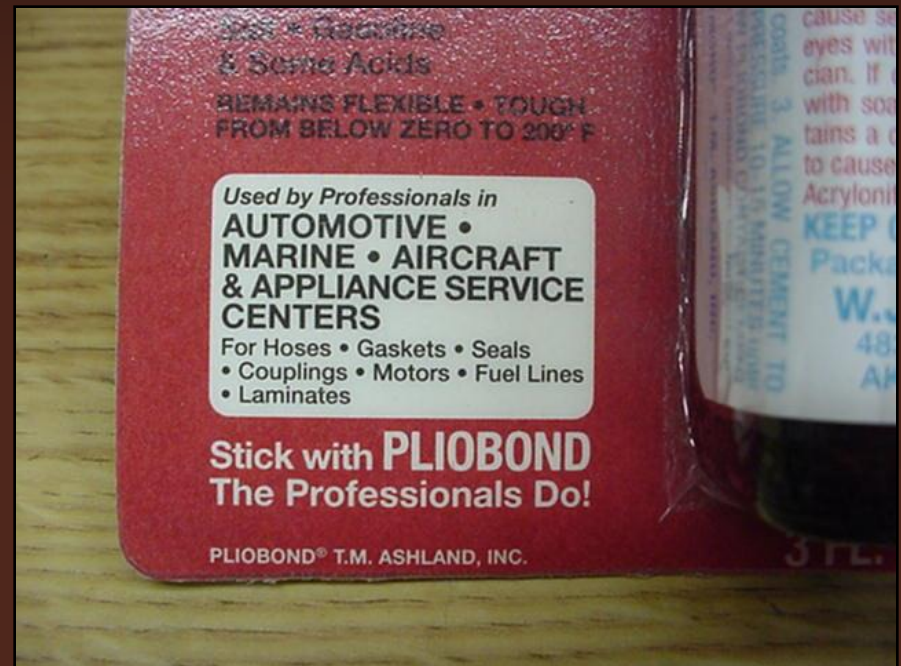
The sudden cooling can create some unique patterns.



Adhesives

- Adhesive backing on rolls of copper
- Double-sided tape
- CA+ (Medium Viscosity Super Glue)
- Contact cement

If you use contact cement, make sure it's compatible with copper!



MEK is the recommended solvent for this product.

1. Dilute contact cement to the consistency of cream.

2. Apply two coats of solution to the hull. Allow to dry thoroughly.

3. Diluted solution will also be used to glue plates to hull.



*This product
is extremely
flammable.*

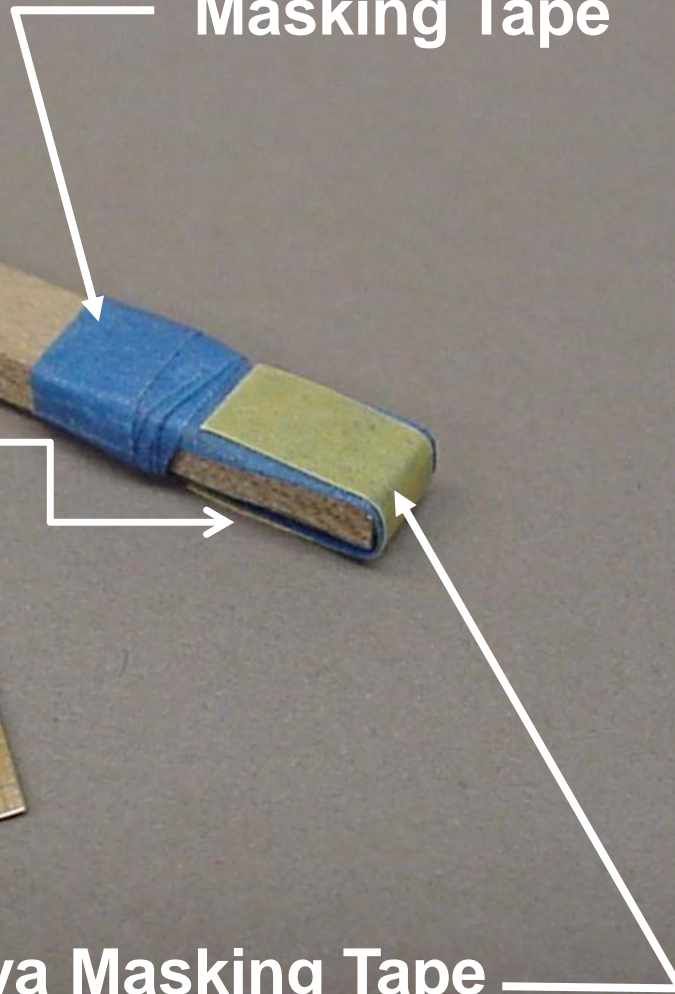
*Use in a well
ventilated
space!*

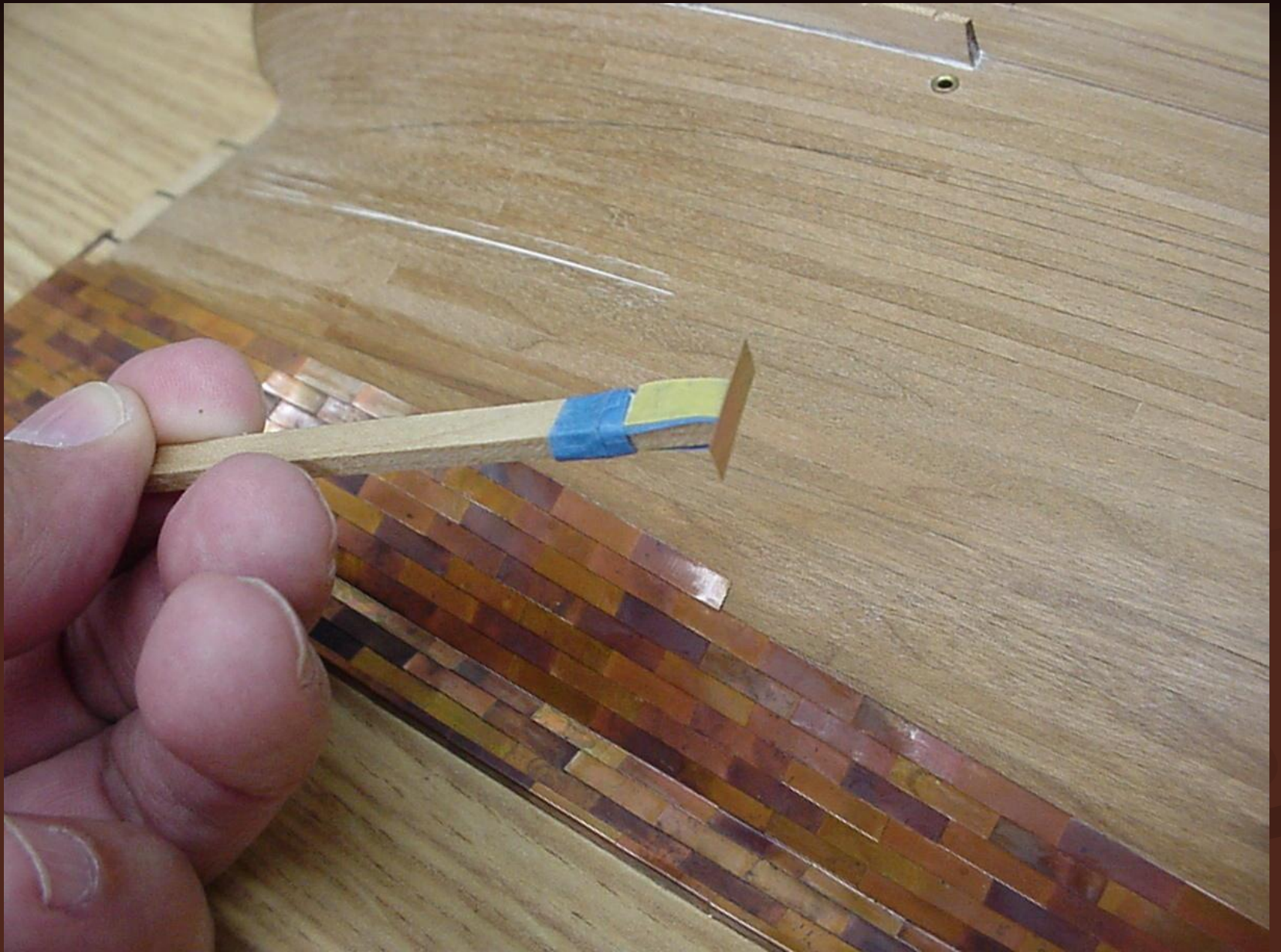


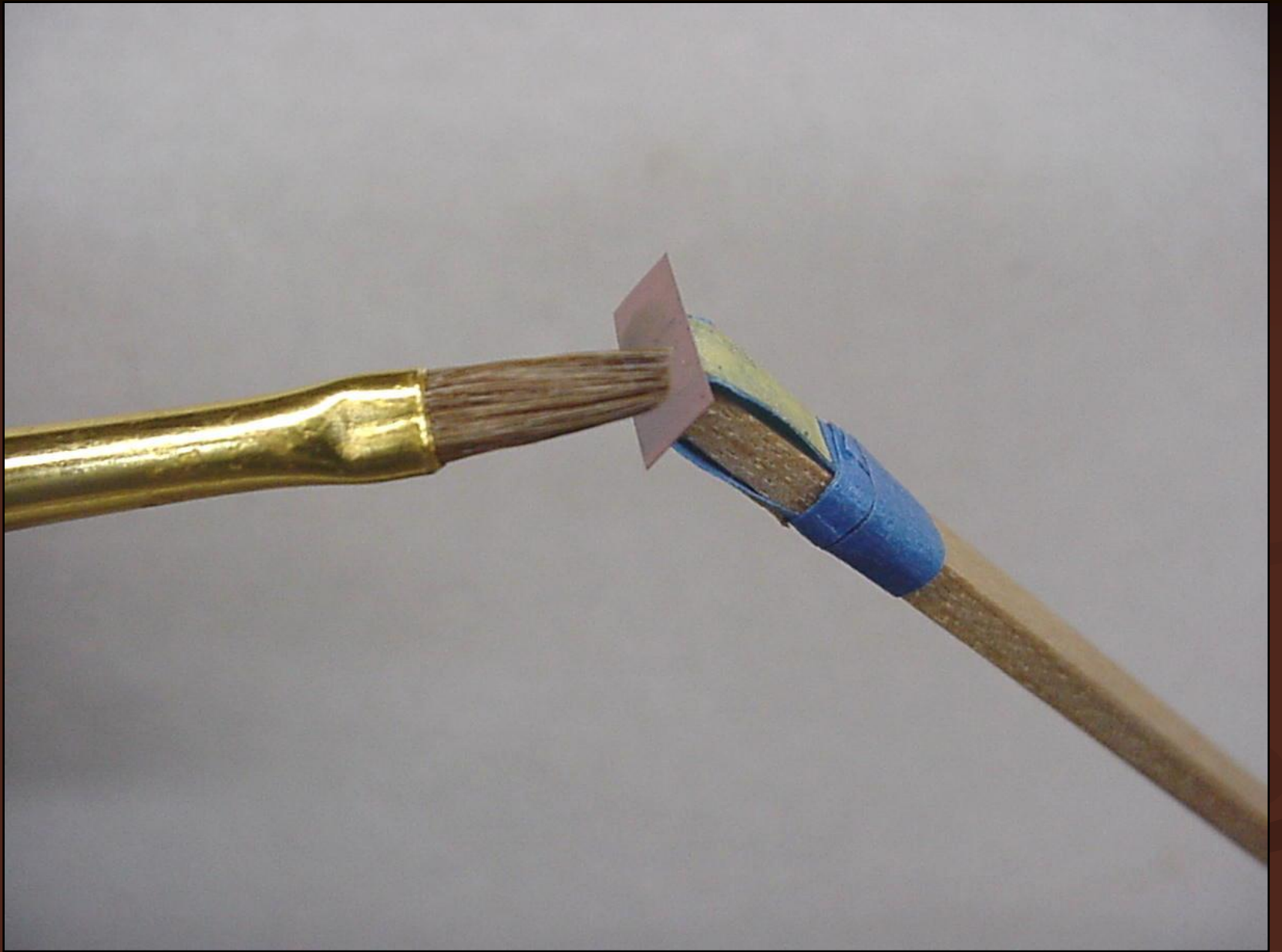
Scotch Brand Painter's
Masking Tape

Scotch Brand Painter's
Masking Tape Sticky
Side Out

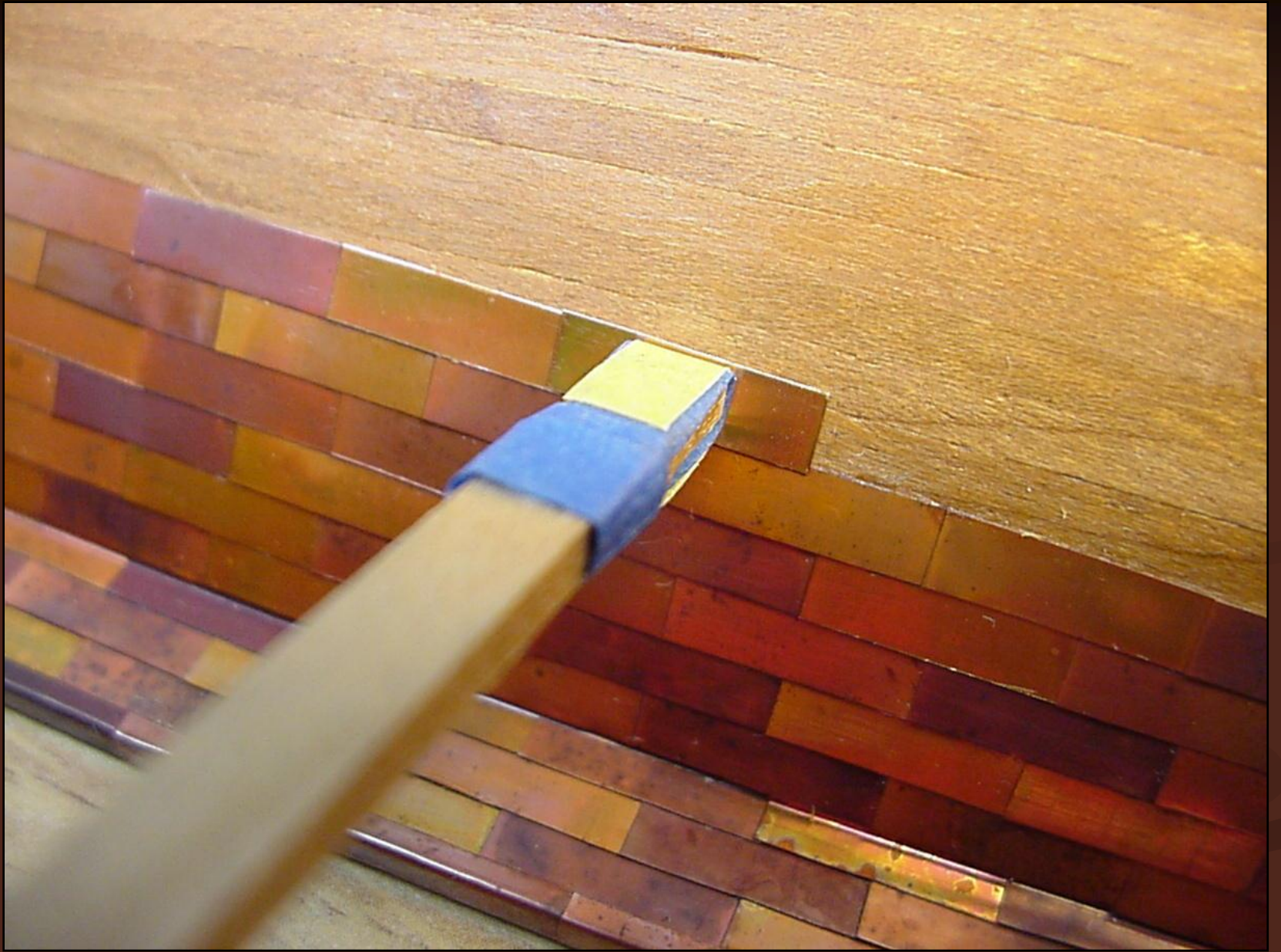
Tamiya Masking Tape
Sticky Side Out



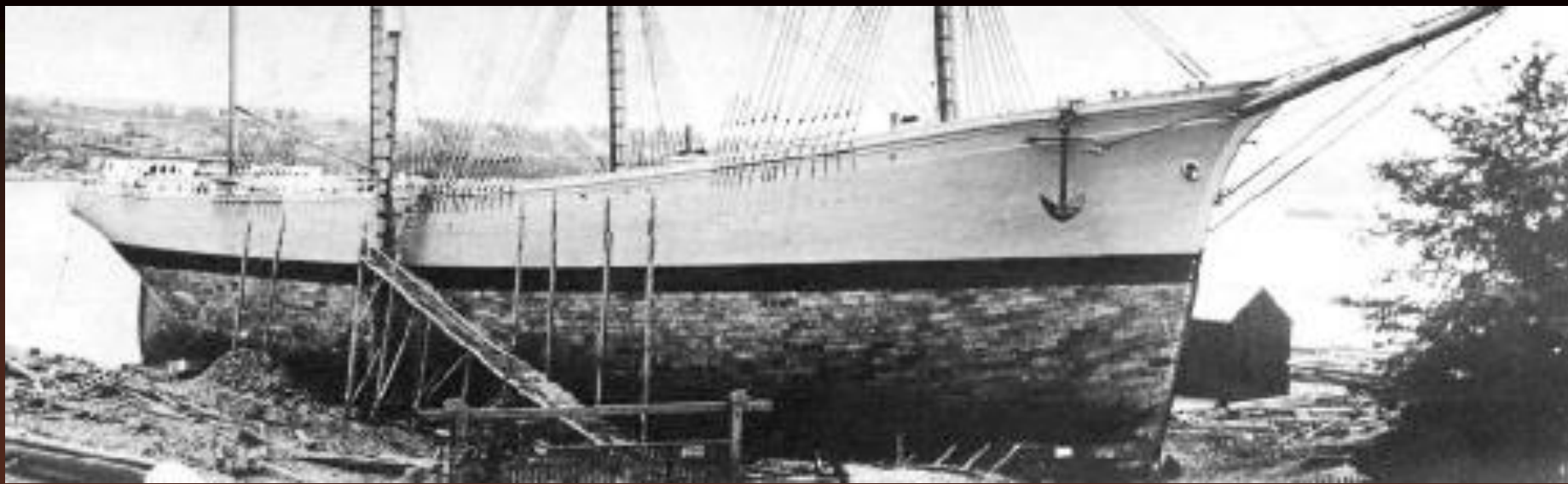












Recommended Reading

- Erik Ronnberg, Jr.
Copper Sheathing of Whaleships,
Nautical Research Journal Vol. 20, No. 4
- Walter J. Zimmerman, Jr.
A Method For Coppering Models,
Nautical Research Journal Vol. 24, No. 2
- Erik Ronnberg, Jr., *The Coppering of Nineteenth Century American Merchant Sailing Ships,*
Nautical Research Journal Vol. 26, No. 10
- Erik Ronnberg, Jr.
A Coppering Method For Models,
Nautical Research Journal Vol. 35, No. 2

THE END

