

*Making Ship's Boats*  
*Part 1*  
*Several Solutions for a*  
*Modeler's "Tool Bag"*

How can I make 2 Cutters and 1 Yawl at 1:64 scale??  
And do it and well!!!!!!

18ft Cutter



22ft Yawl



# How can I make 2 Cutters and 1 Yawl at 1:64 scale?? And do it and well!!!!!!

## The Challenge

*Appropriate Detail*

*Diminutive Scale*

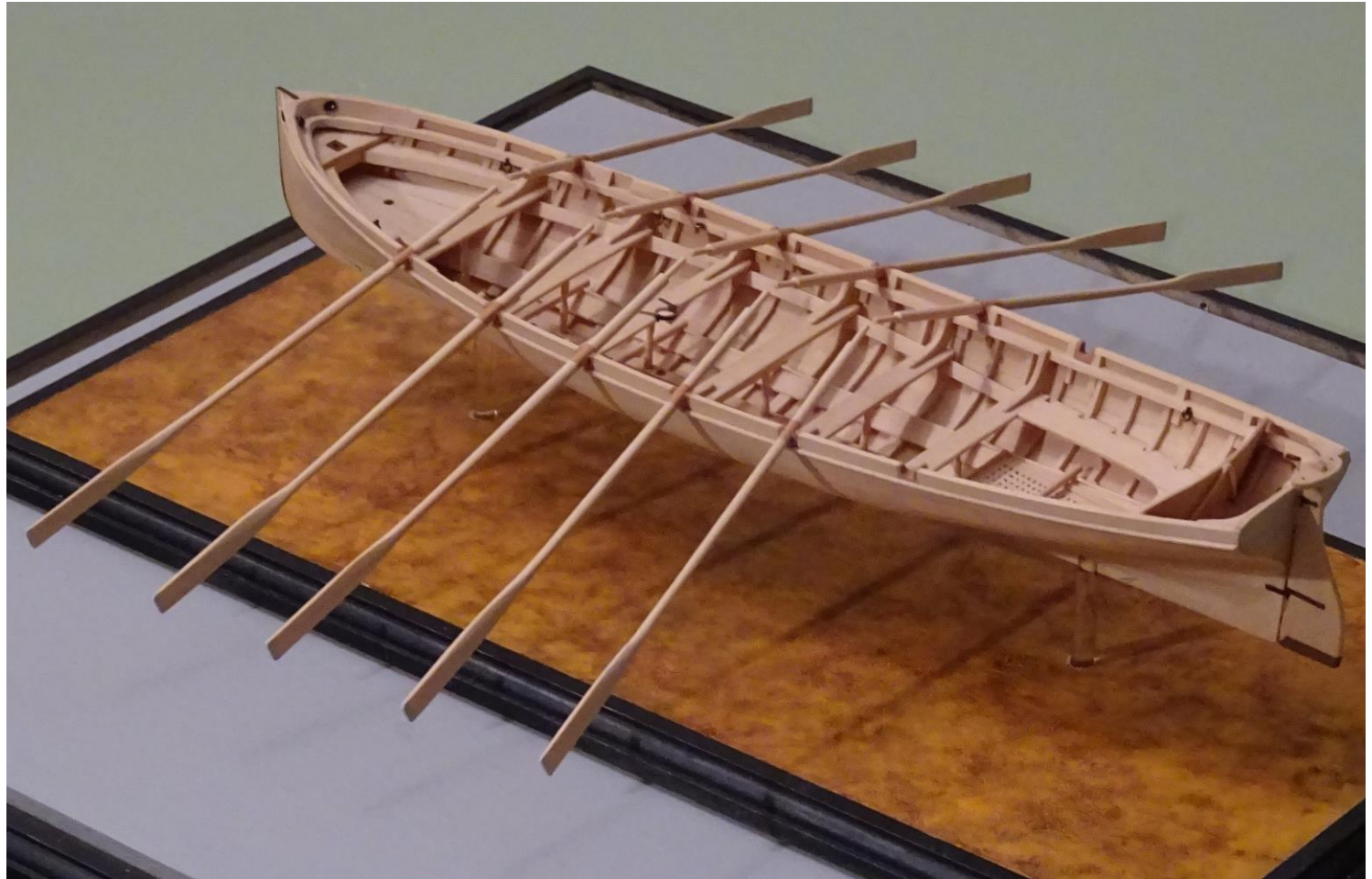
*Available Tool Set*

*Skill Set*

*Time Investment*



- Sharing search results
  - Alternatives
  - High level view of method
  - Pros and Cons
- Not exhaustive



A master's work!  
David Antscherl's scratch 28 ft Cutter @ 1:48



## A brief description of *period* small boat types

- The **Launch or Longboat**; largest row boat on board generally in the 24' to 34' range
- The **Barge**; the commanding officer transport, generally a 12 oar row boat, could be in the range of 30'
- The **Pinnace**; subordinate officers transport, generally 6 to 10 oar, in the range of 25'. Could be sailed
- The **Yawl**; smaller than the Pinnace, in the 20' range also could be sailed
- The **Cutter**; a broader and shorter boat in the range of 18' or more supporting cargo transport
- The **Jolly**; a general shore transport; purportedly named as such for the purpose of shore leave
- The **Gig**; a captains expedition vessel which could be rowed and sailed

## Surprise Find! A Buy Alternative

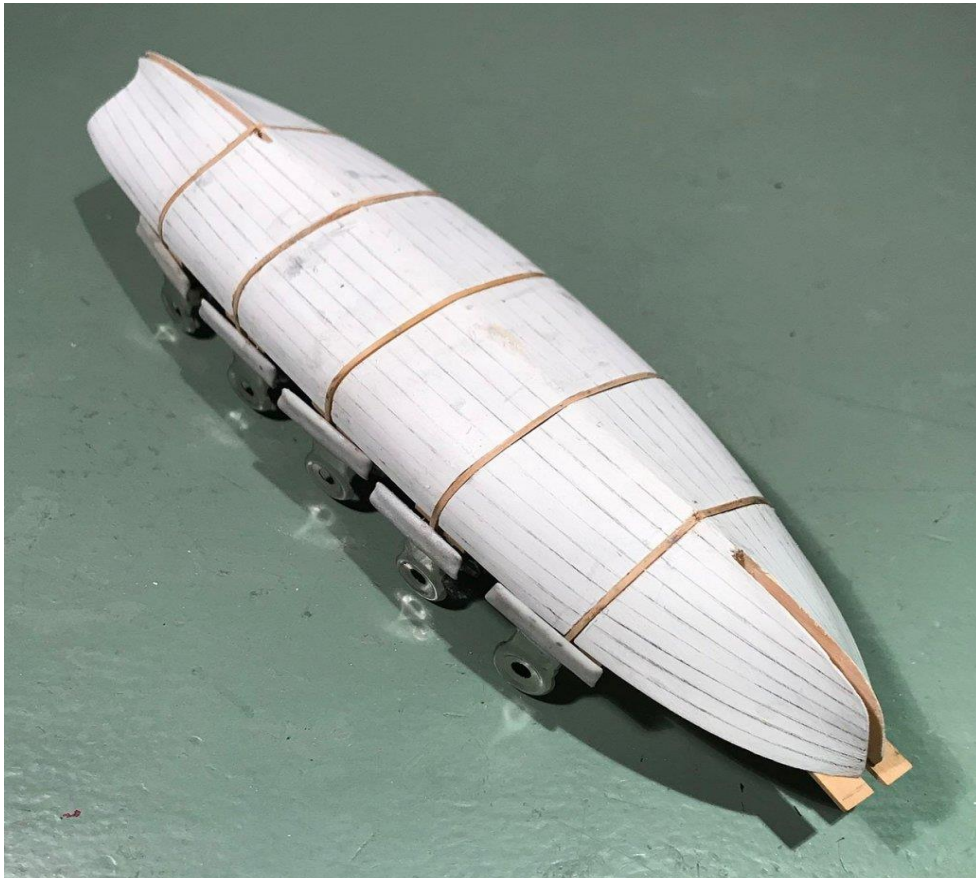
- Kits from Vanguard in 1:64 or 1:48 scale
  - Multiple types; Launches, Yawls, Cutters, Pinnace
  - Plank On Frame
  - Range in cost; USD \$30 to \$55
  - Even offer a 3D printed version; several scales, quite detailed.
    - Cutters and Launches ~\$40 USD
  - + Expeditious
  - - Cost if multiples needed
- Model Shipways Long Boat only other kit known; 1:48\*

\*A Candidate Method for a Make Alternative; see later slide

## Make Alternatives

- Carved solid form or lifts
  - Carved to outside of ribs
  - Carved to inside of ribs
  - If built in half hull form can facilitate stem and stern post rabbets
  - Planked on form over ribs
  - + Cost effective, any scale, reusable form
  - +/- Requires some scaled drawing and carving skill

## Make Alternatives: Carved (+) Reusable form



Contoured form to outside of ribs; David Antscherl



Contoured form to inside of ribs; Ed Tosti

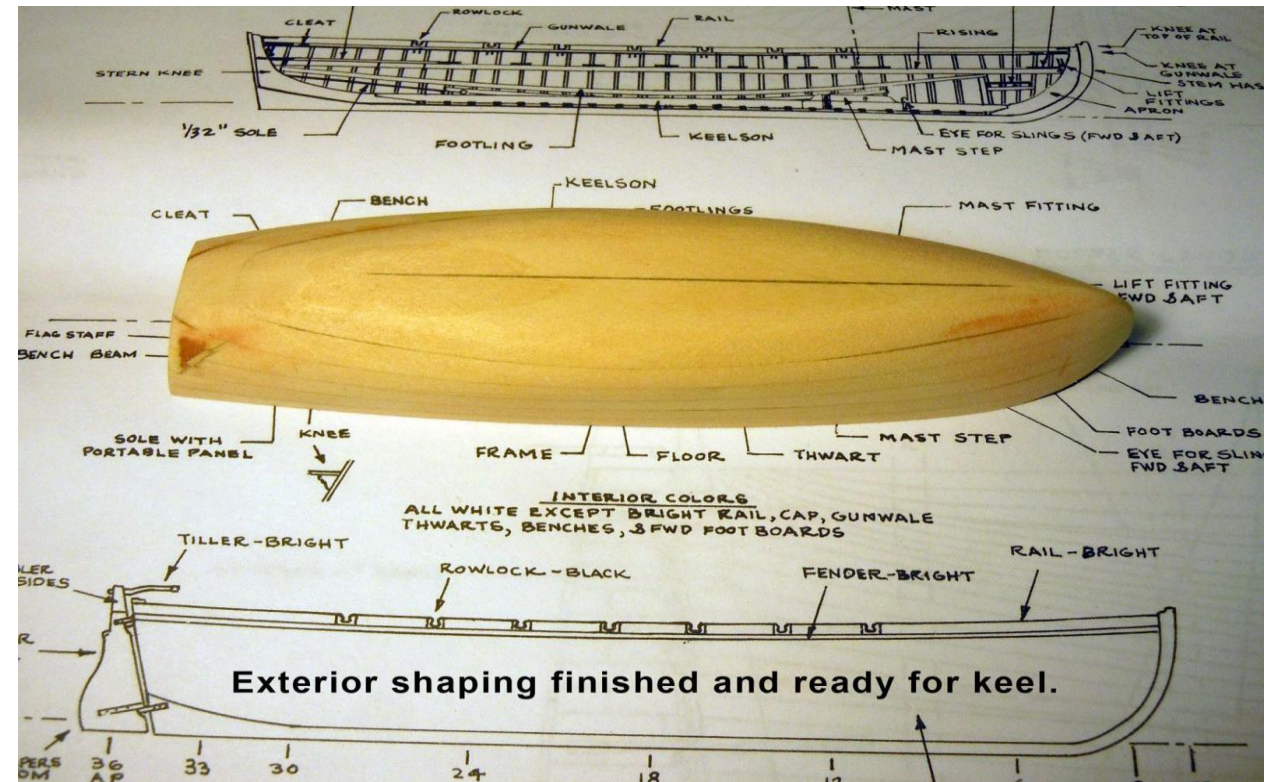
- Ribs just proud of form ;excavated to a specific depth a bit tricky
- + Note # of framing ribs required at this stage



# Make Alternative: Hollow Lift Method

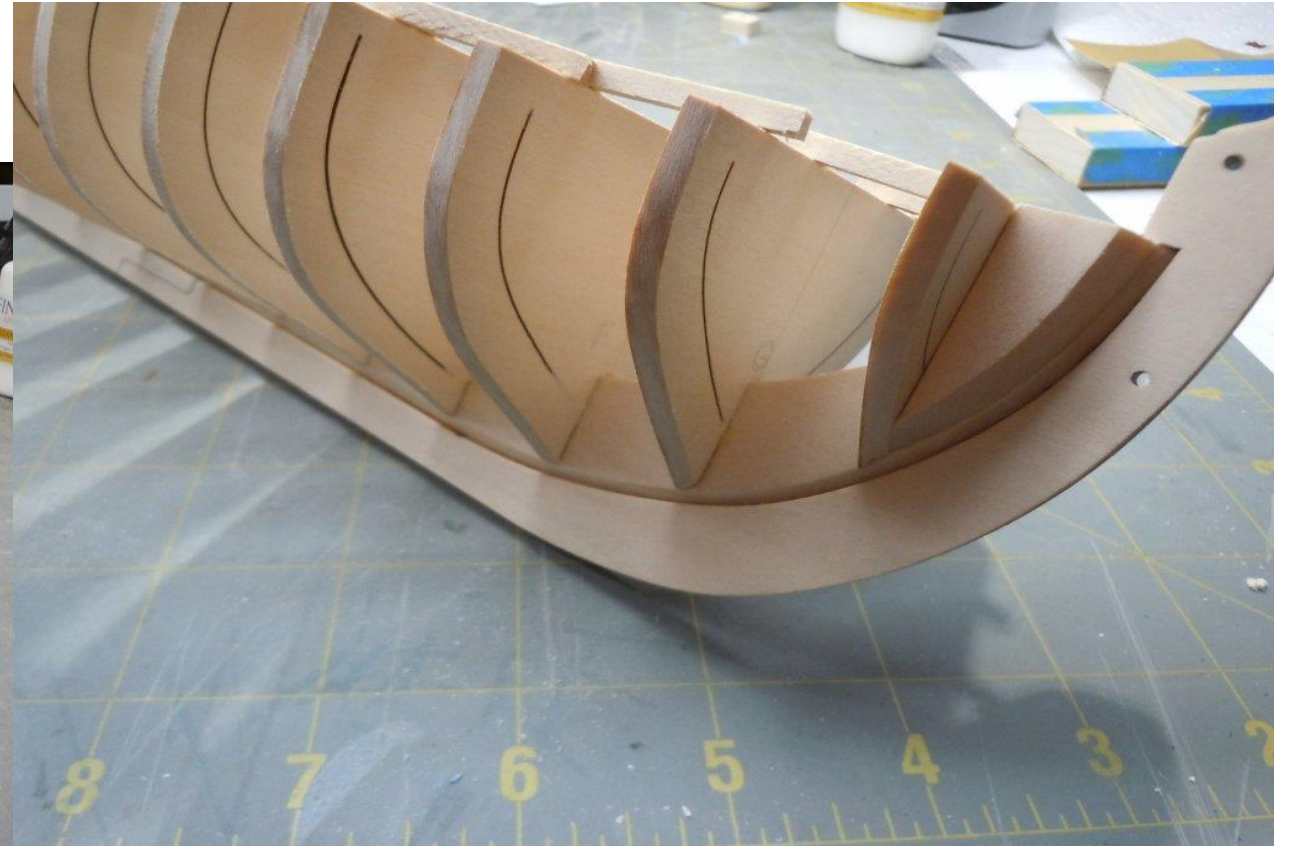


- +/- Requires some design and carving skills
- +/- Lends itself to laser etching for one or more boats
- Most difficult aspect reducing shell to uniform thickness





## Make Alternative: Breakaway Bulkheads (-) Non Reusable



- +/- Requires some design skill
  - +/- Lends itself to laser etching
  - Requires bracing when fairing hull
- Planked before bulkhead breakaway

*Making Ship's Boats*

*Part 2*

*Bill Emerson's Solutions*